



Brochure

blubase™

**Strong in
solar support**



blubaseTM

Contents

04

Where forces
join, energy
is created

05

Get to
know Blubase

06

Strong in
solar support

08

Product
portfolio

10

Mounting system
classic

12

Mounting system
connect

14

Mounting system
roboost

16

Mounting system
rofast

18

Mounting system
QS PV-anker

20

Blubase
Calculator tool

Where forces join, energy is created

Energy released by Solar Construct Nederland and Solarstell joining forces. Two strong brands that from today onwards will continue as one, even stronger brand: **Blubase**.

SOLARSTELL

A manufacturer and supplier of mounting systems for solar panels from the city of Zwolle in the Netherlands, Solarstell is a well-known player in the market. With the mounting systems Classic and Connect, Solarstell offers a solution for both pitched and flat roofs. Solarstell was able to get into gear quickly by collaborating with the installer and by keeping production in-house.

SOLAR CONSTRUCT

Solar Construct from Maasdijk in the Netherlands is a manufacturer of mounting systems for solar panels and is known for its brands RoBoost, RoFast and the QS-PV anchors. This means that Solar Construct always has a suitable mounting solution for flat, pitched and ballast-free roofs. Thanks to excellent and elaborate service, customers always receive the best advice for the installation of solar panels.



blubaseTM

With our head office in Zwolle, we are ready to make our next move! Together with you, we will take the first step in the energy transition. Blubase offers you the best of both worlds as a customer. You will see a bigger product portfolio, without this affecting the service that you have grown accustomed to. With us, you can buy the well-known mounting systems Classic, Connect, RoBoost, RoFast or the QS PV anchors.

Get to know **Blubase**

Blubase offers mounting systems and services that enable installers to do what they are good at: installing solar panels.

Our product portfolio features various solutions that are good value for money for you as an installer. And they are easy to buy from us. Moreover, we offer deliveries not only in bulk, but also per project.

It is easy to get in touch with Blubase; we listen to you! Your feedback is our motivation to innovating. That applies to both our product portfolio and our services. Through intensive cooperation, we reduce our time to market and we speed up the energy transition.



MAKE LIFE EASY

We offer mounting systems and services that enable installers to do what they are good at: installing solar panels.



GOOD VALUE FOR MONEY

We offer you as an installer various solutions with a good price/quality ratio. And they are easy to buy from us.



WE LISTEN TO YOU

You can contact us easily and directly. We will sort it for you. Your feedback is our motivation to innovating. We are stronger together, that is why we work closely and intensively with you.

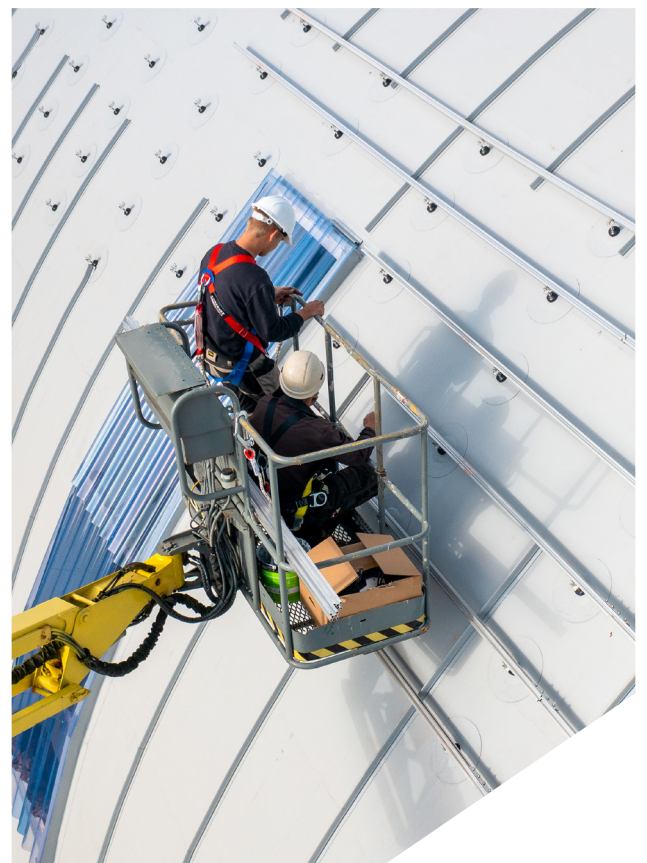
STRONG IN SOLAR SUPPORT

Installing solar panels quickly and easily? It can be done with the mounting systems from Blubase that have been specifically designed for the solar installer. We aim to make life as easy as possible for the installer. We do so by supplying well-devised mounting systems that can be assembled without any mistakes. That makes for high quality, and it saves a lot of time in the process!

A STRONG FOUNDATION FOR SOLAR PANELS

Our mounting systems are developed with the emphasis on convenience for the installer and the best quality for a long product life. Thanks to our knowledge and experience, we are always able to offer a suitable mounting solution and make sure that more and more energy is generated from sustainable sources.

With over 10 years of experience and thanks to close cooperation with our customers, we are able to keep developing our mounting systems. Every component is examined with a critical eye, feedback is given plenty of attention and every test is comprehensively analysed. We do all this so we can offer the best value for money and make things as easy as possible for the installer.



SERVICE WITH A CAPITAL S

At Blubase we are there to help you. We can tell you everything about our products and give you the right advice for every roof. Providing personal support matters a lot to us and we put a lot of effort into this.

Apart from providing a personal service, we also make sure it is a piece of cake to do the calculations for a project. That, of course, is done with the Blubase Calculator, using which you can calculate your projects down to the smallest detail. Downloading the project plan and ordering your materials immediately, it doesn't get any easier than that. Do you have a special project or are you going round in circles? In that case we are keen to help you!



20-YEAR WARRANTY

Our mounting systems are good value for money and are made of high-quality steel and aluminium. Because of extensive testing and expert advice prior to mounting, you will always have a suitable system on the roof.

This is why we are confident to give you a 20-year warranty. Our engineers always cast their critical eyes on what can be improved and how we can make the system even smarter. Thanks to wind tunnel tests and testing by KIWA (a Dutch Testing, Inspection and Certification organisation), we know exactly what our certified systems can endure.



"We get help with calculations for bigger projects and the personal interaction is great.

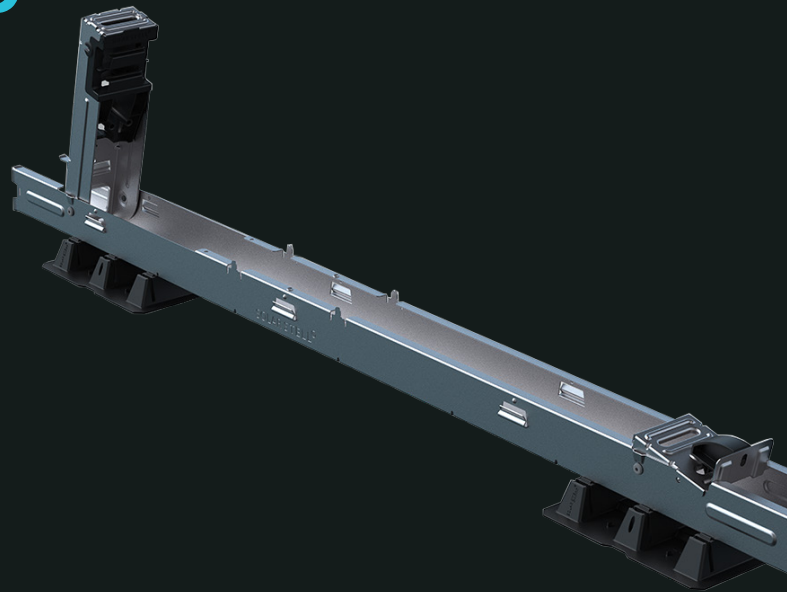
The systems come into their own on every type of roof, they can be installed firmly and quickly and we can install all types of systems with a small amount of stock."

PRODUCT PORTFOLIO

Blubase's product portfolio has been enhanced with a good **price quality ratio**. We offer mounting solutions for pitched, flat and slightly slanting roofs.

With our mounting systems you can quickly and **easily** install solar panels on the roof of a residential or commercial property.

All our products have been tested extensively and comply with European standards. You can use our **Calculator** for the correct calculation of the best material.



Minimum number of SKUs



Quick mounting



Made of reliable and durable Magnelis steel



Suitable for landscape & portrait installations



Ready-to-use basic element



Includes cable management

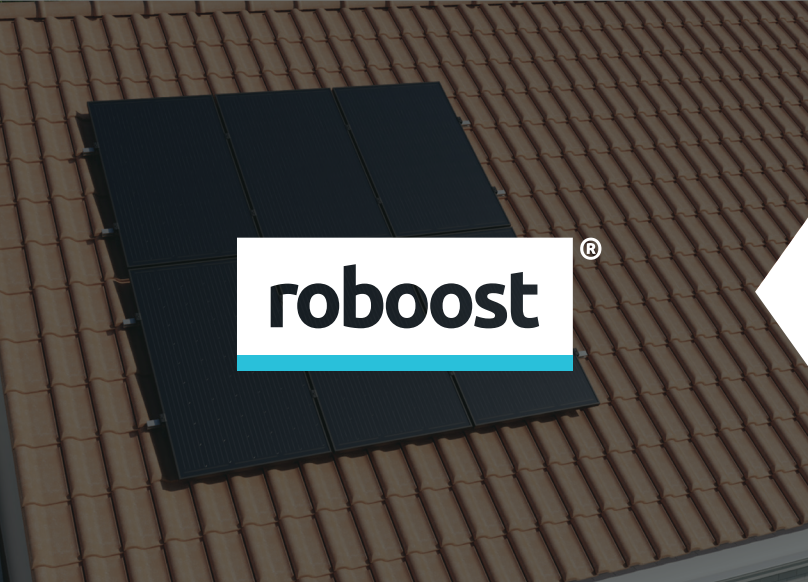


Clicks into place without screws



South, East-West and portrait setups available





- ✓ Universal components
- ✓ Error-free installation due to rotary coupling
- ✓ Made entirely of aluminium
- ✓ Robust, very strong and easy to equipotentially bond

- ✓ Error-free installation due to smart rotary coupling
- ✓ Includes cable management
- ✓ Completely preassembled
- ✓ Possibility of anchoring



- ✓ Resists high compressive (pushing) and tensile (pulling) forces
- ✓ 100% watertight connection
- ✓ Can be used on flat, pitched and slightly slanting roofs
- ✓ Prevents damage to the roof



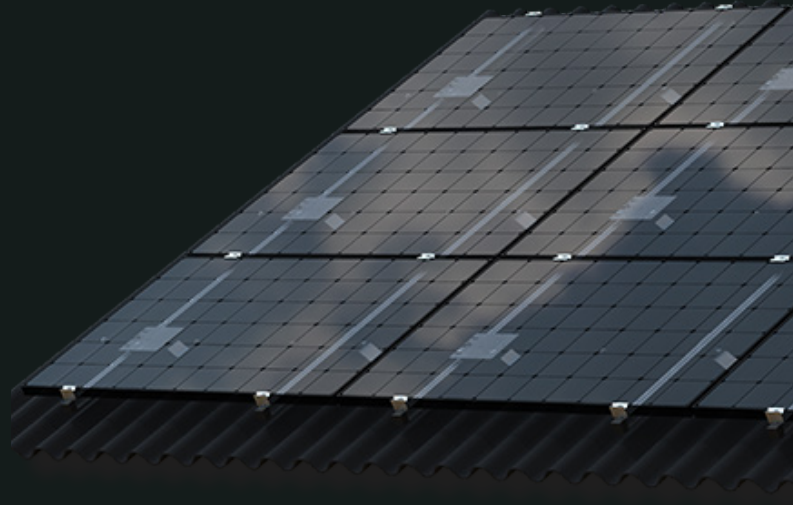
More information about and specifications of the systems can found elsewhere in this brochure

classic[®]

For pitched roofs

Classic is quick and easy. Installation only requires a few components. With Classic for your tiled roof, you have the **mounting system** that allows for the quickest installation. Classic is a solution for tiled roofs and steel roofs.

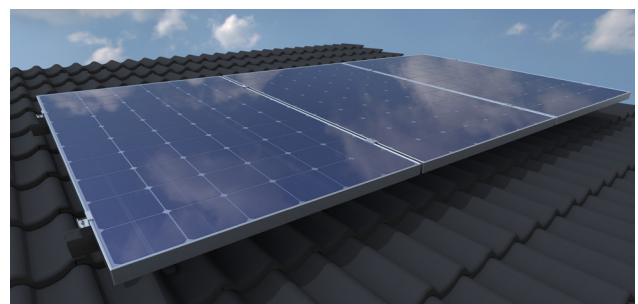
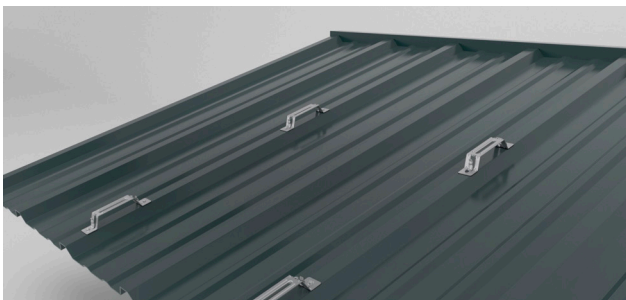
Additionally, we offer a few other **Blubase solutions**. For example, you can use a wave clip for installation on corrugated sheets and there is also another solution for slate roofs and standing seam roofs.



INSTALLATION WITHOUT A CARE

TILED ROOF

One hook for every tile, installed without tools. Is that possible? Yes, it is! The smart hook can be firmly clamped on in a jiffy and the mounting rail can be easily clicked into place on top of it. Classic is made of high grade aluminium and stainless steel. That is why we offer a 20-year product warranty.



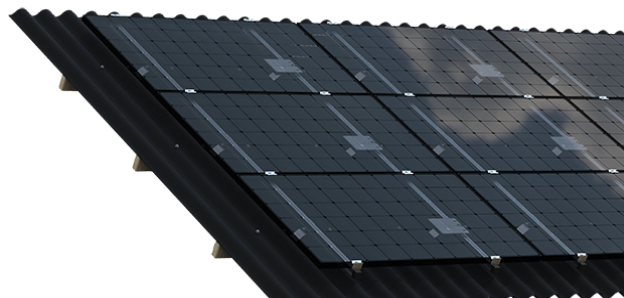
STEEL ROOF

Steel roofs are often seen on large surfaces. These are an ideal foundation for solar panels. With Classic for steel roofs, you can mount them in no time. You screw the bracket directly onto the roof, lay down the solar panels and screw the clamps tight.

OUR OTHER MOUNTING SOLUTIONS

WAVE CLIP

An alternative for the hanger bolt? That is possible with the Blubase wave clip. It uses the force of the corrugated sheet and the bolt that is already there. This makes for an even more stable construction and a better distribution of the load. Installation is very easy too.

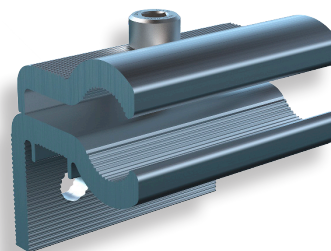


SLATE ROOF

On a slate roof you want to use slate hooks, which have been specially developed for this particular roof type. The mounting rails can be easily attached. Then you click the EasyClamps into place and mount the solar panels.

STANDING SEAM ROOF

We also have a good solution for standing seam roofs and the kalzip system. A rail-based system that can be used to mount the solar panels in combination with our EasyClamps.



Quick and easy mounting



Minimal number of components



A solution for every roof



Made of reliable and durable Magnelis steel



Suitable for landscape & portrait installations

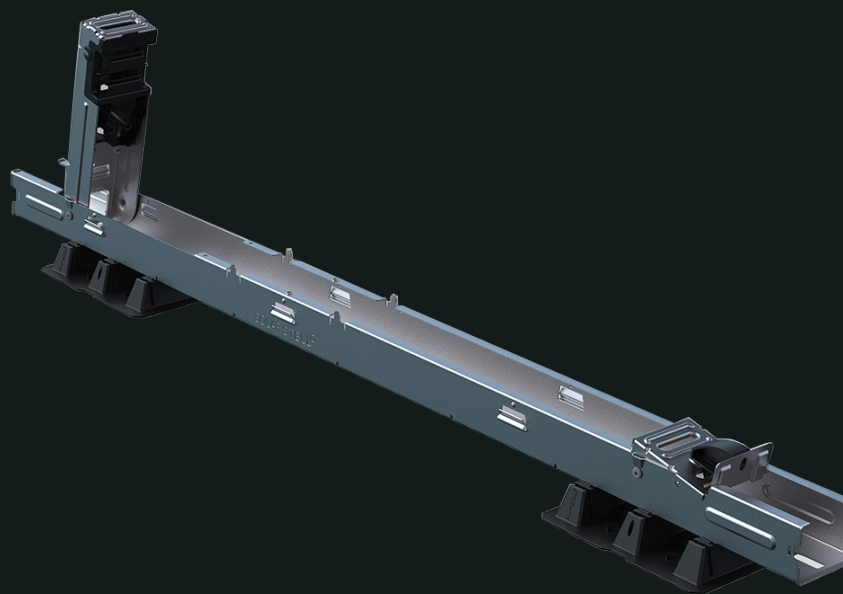


20-year warranty

connect[®]

For flat roofs

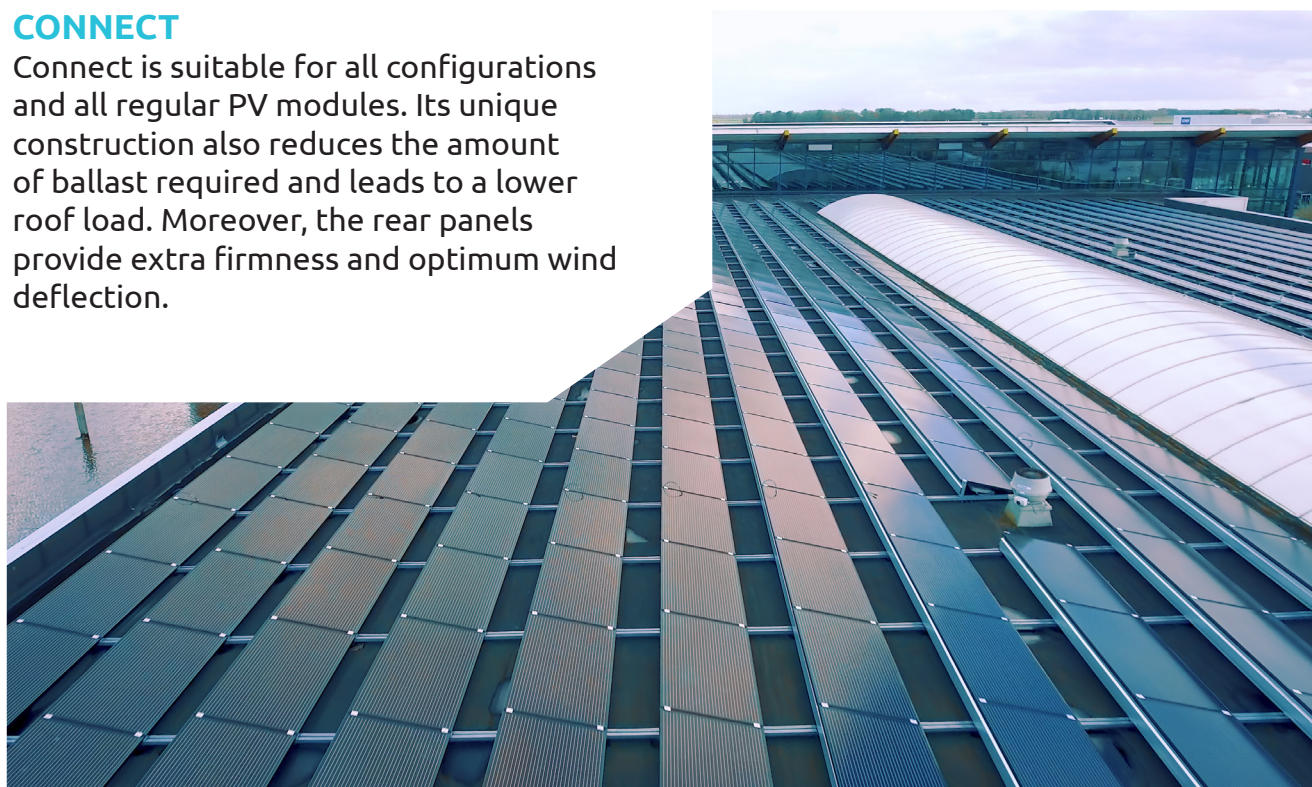
If you're installing **high-quality** solar panels, you want to be able to rely on the **quality** of the mounting system. **Connect** stands out not only because of its solid construction, it also allows for superfast mounting. Nearly all components are delivered preassembled. That way, you only have one basic element on the roof. **Unfold, click, ready.**



MINIMUM OF BALLAST, MAXIMUM FLEXIBILITY

CONNECT

Connect is suitable for all configurations and all regular PV modules. Its unique construction also reduces the amount of ballast required and leads to a lower roof load. Moreover, the rear panels provide extra firmness and optimum wind deflection.



EAST-WEST

PV projects are all about quality, speed and surface. The Connect East-West mounting system meets all three requirements.

It has a solid construction of corrosion-resistant material, smart basic elements for quick mounting and the smallest pitch length in the market, which means the highest number of solar panels per square metre; up to 8% more than the current standard.



INSTALLING SOLAR PANELS QUICKLY AND EASILY



CLICK, READY!

Our ready-made basic elements are available in two sizes and are up on the roof in no time. A question of unfolding, clicking, ready. Using various connectors, you decide where the walkways are going to be. This way, you make the installation plan very flexible and you will get the most out of the roof surface. Using the conduits, you can safely and quickly place all cables out of sight. An optimiser can be secured in the eaves just like that. Our system has few components and you can fit 2 panels on 1 basic element. This allows for superfast installation.



Carriers are recyclable and UV light-resistant



For portrait, South and East-West



Few components so really easy



Very little packaging material



Ready-to-use basic elements



20-year warranty

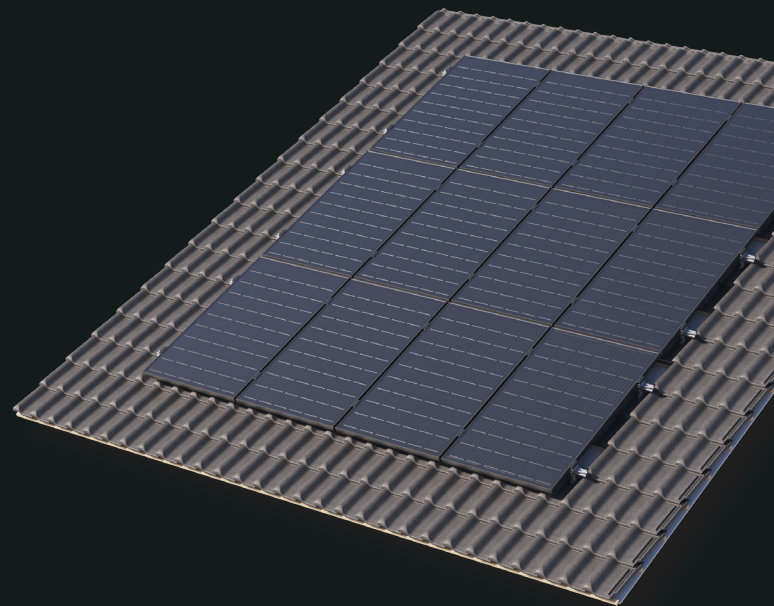


For pitched roofs

RoBoost is the mounting system for pitched roofs. RoBoost consists of a **limited number of components** and has all the features that enable you to mount the system quickly and easily.

What makes the roboost mounting system unique are the smart **rotary couplings**.

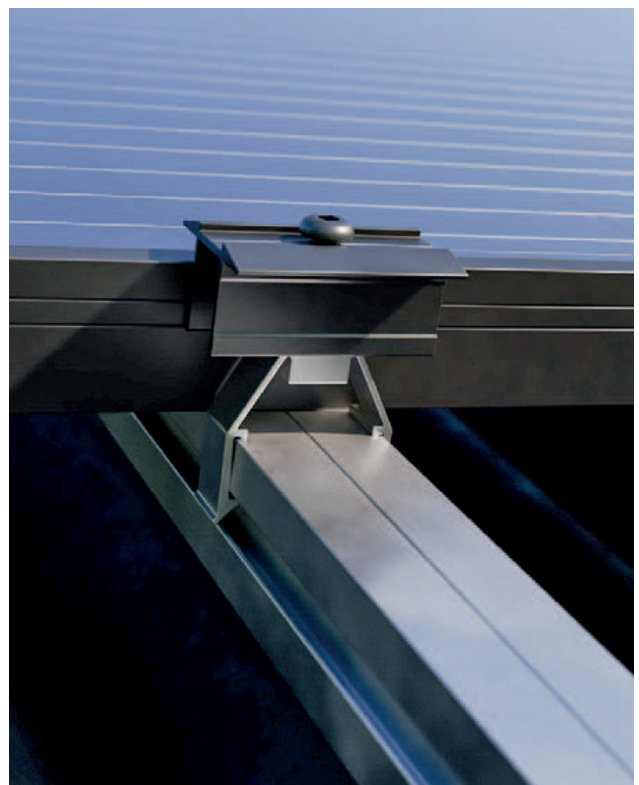
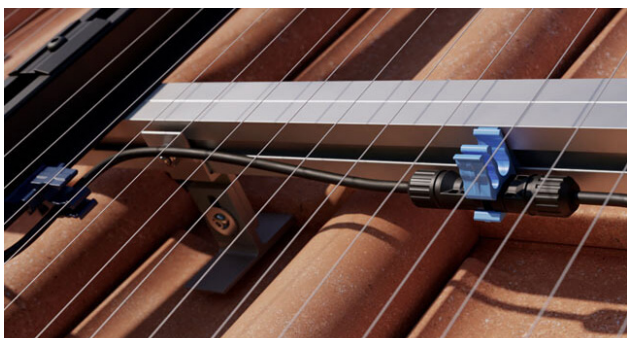
They ensure that mounting is only possible one way, which helps with the alignment of the mounting rails, in other words it is **simple** and **fast**!



ROBOOST

The components are made of aluminium, which makes them sturdy and strong. The strong mounting rails, universal clamps and smart clips for cable management complete the system.

The systems can be used for roofs with corrugated sheets, tiled roofs, farmhouse roofs, EPDM rubber, bitumen and steel roofs.



TILED ROOF

Our strong aluminium roof hooks are used for tiled roofs. Thanks to rotating couplings, with which the mounting rails are rotated in the roof hook, the mounting rails are correctly aligned immediately, so no correction afterwards will be necessary. That saves a lot of time.

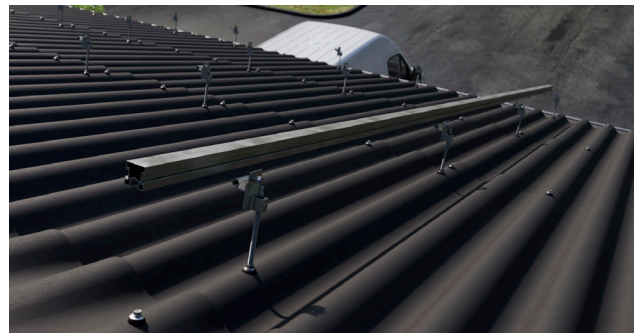


STEEL ROOF

The system for steel roofs can be created with as few as 3 components. The mounting profile can be installed easily without any drilling by using the self-tapping screws. The EPDM rubber under the mounting profile creates a 100% watertight seal.

CORRUGATED SHEETS

One of the smart components that allow for easy mounting on a roof with corrugated sheets is the hanger bolt. The hanger bolts are adjustable, so any unevenness in the roof can be eliminated.



Error-free installation due to smart rotary coupling



Less labour time required thanks to quick mounting



Universal components



Robust and very strong system



100% watertight connection

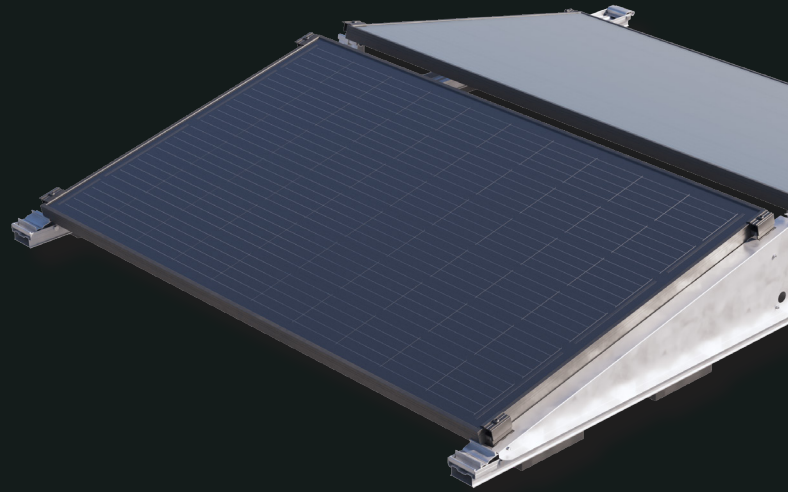


20-year warranty

rofast[®]

For flat roofs

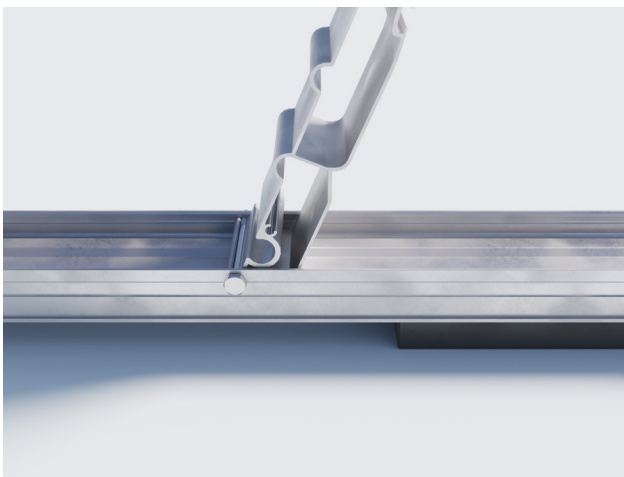
RoFast is a mounting system for **flat roofs** that is specifically designed for the installer of solar panels. **RoFast** consists of a minimum number of components, is delivered completely assembled, completely connected and is available in a **South** and an **East-West** setup.



QUALITY AND SPEED FOR FLAT ROOFS

UNIQUE

What makes RoFast unique is the smart rotary coupling with which the profiles are connected with each other. The rotary coupling ensures that mounting is only possible one way, so this is a simple, very fast and reliable method!



QUICK AND EASY INSTALLATION



ROTATE AND READY

RoFast consists of a minimal number of components. The ready-to-use basic elements are available in variations and can be quickly installed on the roof. It is a matter of unfolding, coupling and you are ready. Cable management is easy, thanks to the available cable and panel clips.

RoFast is available in both a South and an East-West setup. Additionally, the system is suitable for state-of-the-art panels, with a maximum panel width of 1150mm.

STRONG AND DURABLE

The components in the RoFast mounted system are made of aluminium. That makes RoFast robust, strong and easy to equipotentially bond. The system uses the well-known universal clamps. If you use the panel and/or cable clip in a well-chosen position, cable management also becomes a doddle.



Robust, very strong and easy to equipotentially bond



Available in a South and an East-West setup



Minimal number of components



Made entirely of aluminium



Certified and safe



Supplied completely preassembled

Ballast-free mounting system

The **QS PV anchor** is the solution for installing solar panels on pitched roofs made of bitumen, EPDM rubber or PVC. Thanks to this anchor, mounting can be achieved without **ballast**.

The QS PV anchor is attached to the roof structure mechanically and sealed to be **100% watertight**.



QS PV ANCHORS

Challenging roofs, with some unevenness, a slight slope or those where using ballast is not feasible, were previously simply given a miss when it came to solar panels. That will no longer be necessary. Thanks to our QS PV anchors, now even these types of roof can have solar panels installed!

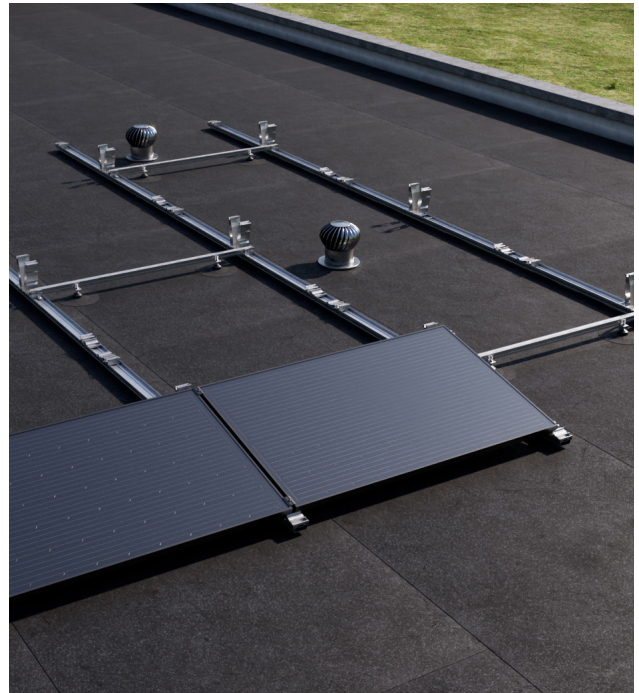


**STRONG AND SMART
FIXING MATERIAL FOR
SOLAR PANELS**

BALLAST-FREE

The QS PV anchors form a strong fixing material for solar panels. A lot of thought has gone into making these anchors user-friendly, to make them quick to mount. Thanks to these anchors, solar panels can be installed on a roof without any ballast.

BALLAST-FREE, WATERTIGHT AND STORMPROOF



ADVANTAGES

The QS PV anchors are supplied assembled, which enables installers to work quickly. The anchors themselves have been developed sustainably and also ensure that the roof stays sustainable. For example, they ensure that important functions of the roof – such as allowing water to run off – are maintained. The possibility of the systems shifting to some extent, with the associated risk of damage to the roof material, is now completely excluded.



Resists high compressive (pushing) and tensile (pulling) forces



100% watertight connection to every type of roof material



Easy to install



Can be used on flat, pitched and slightly slanting roofs

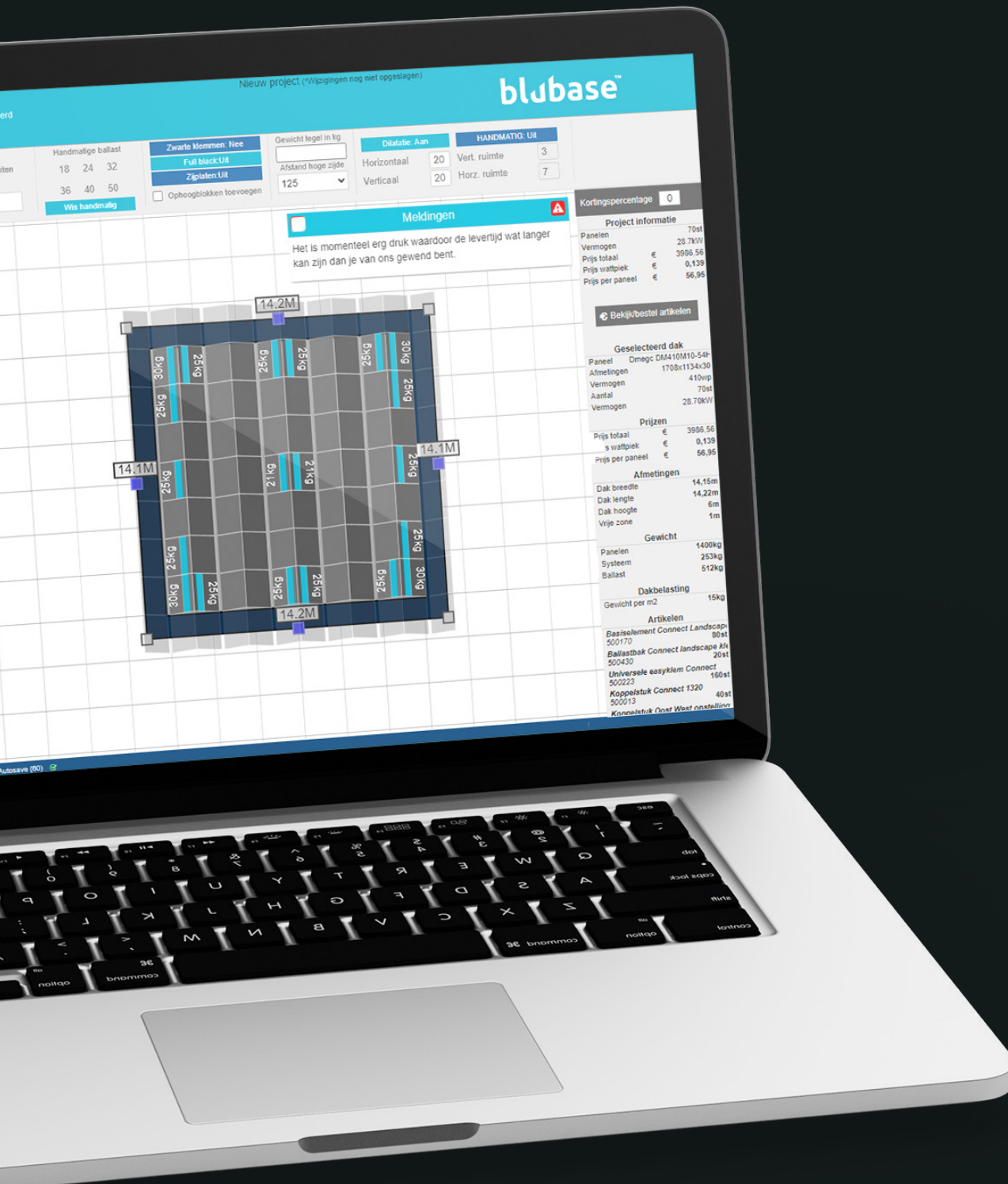


No movement on the roof material



Prevents damage to the roof

Blubase calculator tool



QUICK CALCULATION AND EASY ORDERING

The Blubase Calculator lets you calculate your projects quickly and easily. Select your region, your type of roof and the type of solar panels, draw your roof and select the desired mounting system. Download a list of materials and a custom construction plan immediately. With the new Blubase Calculator, you can calculate all your solar panel projects for both pitched and flat roofs. A single platform for all Blubase mounting systems that lets you make the most reliable calculation for your project. Do you know what materials you need? Then order them directly from the calculator! Send us the list of materials and we will take care of the rest.

ADVANTAGES OF OUR CALCULATOR



ONE CALCULATOR FOR ALL YOUR PROJECTS

You can calculate all your projects quickly and easily in the Blubase Calculator. We offer one calculator for all our products. For example, you can effortlessly make calculations for pitched roofs, as well as flat roofs.



RELIABLE

All results generated by the Calculator are based on extensive testing and the latest safety standards.



A CALCULATION IN FOUR STEPS

Select your location, roof type and your solar panels. Select the mounting system where you want to work, then draw the roof and any obstacles. Finally, download the list of materials and project/ballast plan straight away. Want to order immediately? That is possible as well!



blubaseTM

**Strong in
solar support**





blubaseTM

Siegenstraat 5 | 8028 PT Zwolle, the Netherlands
Tel. +31 (0)85 80 00 501 | Email info@blubase.com
www.blubase.com