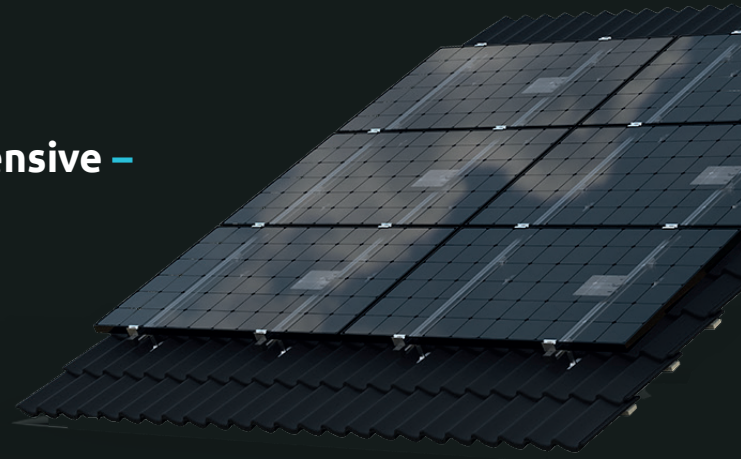


next®

## PV installation on tiled roofs comprehensive – easy – high-quality

No two tiled roofs are the same. However, you still want to have the ideal type of fixing material in stock for every type of roof. That is why we developed Tiled Roof. A comprehensive, **easy** and **reliable** mounting system for all types of tiled roofs. The 40 x 40 mm profile ensures extra stability, so you need fewer hooks. It's super-speedy to install too. Your solar panels are on the roof in next to no time.



### HANDY HOOKS, SMART CLAMPS

Next Tiled Roof works with roof hooks which go behind the tile and tile lath, and screw hooks which attach to the roof sheathing. Secure the solar panels with the handy EasyClamp. Done and dusted.

### ONE BOLT, ONE TOOL

You can secure the entire system using the same M8 bolts. So you only need one hex key on the roof.

### WHY SOLARSTELL TILED ROOF?

- ✓ Fewer hooks required: one bolt, one tool
- ✓ Roof hooks or screw hooks
- ✓ Small, easily manageable supply
- ✓ Includes handy EasyClamp
- ✓ 20-year warranty

### RIGID CONSTRUCTION, FEWER HOOKS

We use mounting rails with a rigid profile of 40x40 mm. This means you need fewer hooks, which saves you time and money.



### HANDY CALCULATOR FOR INSTALLERS

Making calculations for your next project? Use our calculator to get the figures you need quickly and place your order directly. Including:

- ✓ Material list
- ✓ Schematic
- ✓ Ballast plan

blubase™

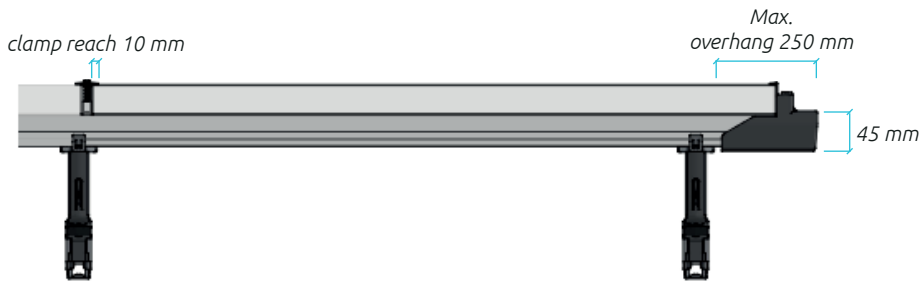
### WANT MORE INFO?

Call us on +31 (0)85 8000 501  
or email [info@blubase.com](mailto:info@blubase.com)

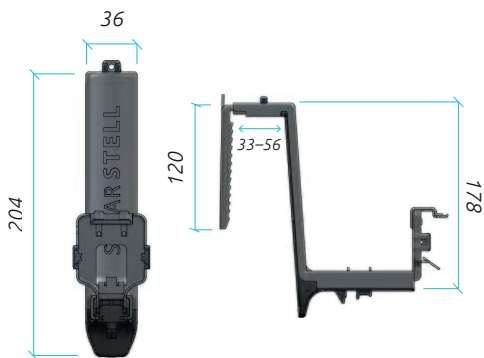
## PRODUCT INFORMATION

<b>Orientation</b>	<i>landscape/portrait</i>
<b>Angle</b>	<i>from 10°</i>
<b>Materials</b>	<i>Magnelis steel, aluminium, technical plastic</i>
<b>Roof type</b>	<i>tiled roofs</i>
<b>Solar panels</b>	<i>all conventional PV modules</i>
<b>Warranty</b>	<i>20 years for the materials (if installed according to the manual)</i>

### TOP VIEW



### ROOF HOOK



### SIDE VIEW



### AVAILABLE LENGTHS

#### MOUNTING RAIL 40X40 MM

Article no. 221080	1080 mm
Article no. 222100	2100 mm
Article no. 223280	3280 mm
Article no. 224350	4350 mm
Article no. 225570	5570 mm
Article no. 226500	6500 mm
Article no. 236500	6500 mm
Article no. 226188*	6100 mm

*\*(Only for 40x80 mm mounting rail)*

### NO-GO ZONE

Turbulent wind flows can occur along the facade. Therefore, keep a zone at the edge of the roof free from solar panels. Keep a minimum of 30 cm free all the way around.  
NEN 7250: 2014

### LOAD

The system adds 1.8 kg/m<sup>2</sup> to the weight on the roof.

### EQUIPOTENTIAL BONDING

The equipotential bonding takes place automatically due to the aluminium. This prevents the build up of voltage in the system to ensure the inverters or micro-inverters are not damaged. NEN 1010:2015

### EQUIPOTENTIAL BONDING

NEN-EN 1990 Eurocode: Basis of structural design  
NEN-EN 1991-1-3 Actions on structures - Snow loads  
NEN-EN 1991-1-4 Actions on structures - Wind actions  
NEN 7250 Solar energy systems - Integration in roofs and facades  
NEN-EN 1999-1-4 Design of aluminium structures  
NEN-EN 1997 Geotechnical design