

roboost®

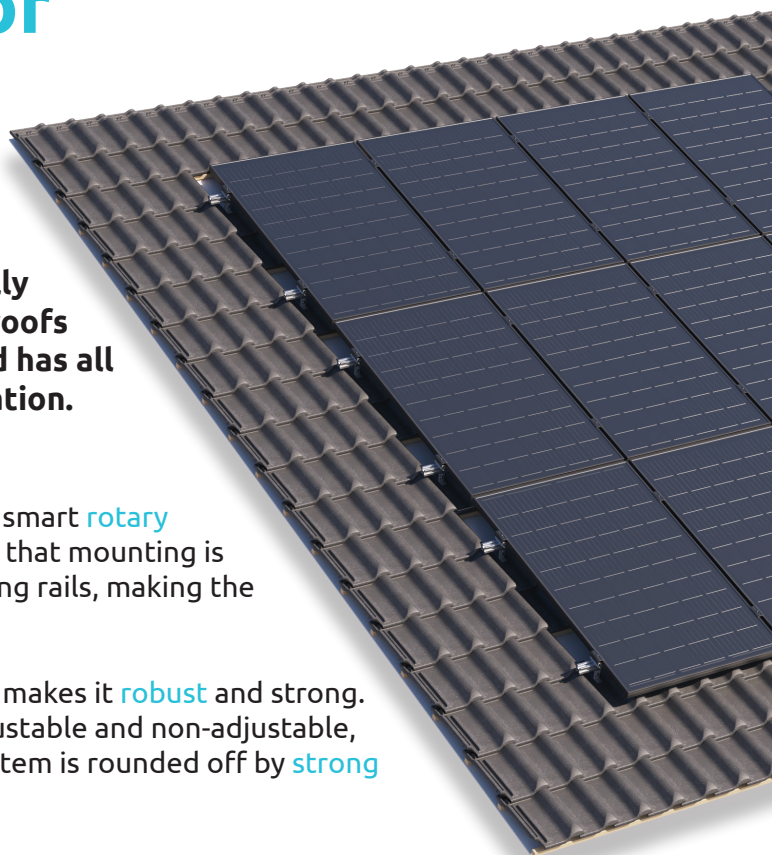
blu**base**™

Mounting system for tiled roofs

Install solar panels simply and quickly on tiled roofs? This is possible with roboost, the Blubase mounting system that has been specially developed for solar installers. roboost for tile roofs consists of a limited number of components and has all the features to enable simple and quick installation.

A unique feature of the Blubase roboost system is the smart **rotary coupling in the roof hook**. The rotary coupling ensures that mounting is only possible in one way and helps to align the mounting rails, making the operation simple and fast!

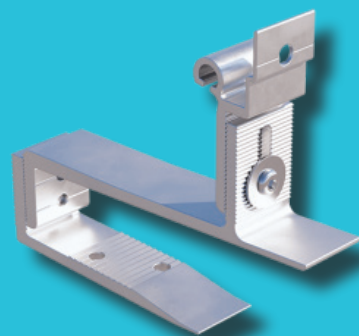
The roof hook is completely made of aluminum, which makes it **robust** and strong. The range consists of several types of hooks, both adjustable and non-adjustable, and with or without screw connection options. The system is rounded off by **strong** mounting rails and the universal clamps.



Easy & smart installation

- ✓ Shortened working times due to rapid assembly
- ✓ 20-year warranty
- ✓ Improved tip pressure and reduced risk of tile breakage due to extended roof hook

- ✓ Error-free installation thanks to smart rotary couplings
- ✓ Made entirely of aluminium
- ✓ Universal components



Roboost

Roboost: the power of rotation

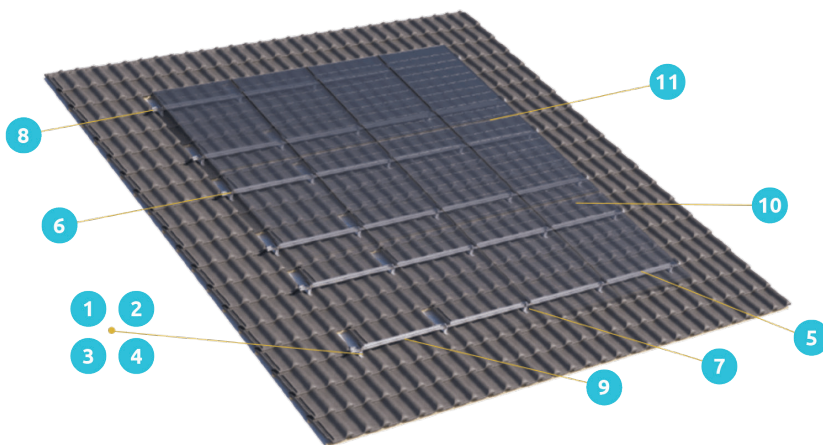
Roboost for tiled roofs is a **high quality** system with smart and powerful rotary couplings. A lot of consideration has been given to the user-friendliness of the components to ensure **ease of assembly**. Blubase offers different solutions for different roofs. All guaranteeing excellent value for money for you as an installer.

Strong in solar support!

- ✓ We listen to you
- ✓ Comprehensive technical support
- ✓ Excellent price/quality ratio
- ✓ Smart mounting systems
- ✓ Certified, safe and 10+ years of experience
- ✓ Extensive calculation support



Easy mounting with smart rotary couplings



- 1 Rotation roof hook, complete
- 2 Roof hook uni, complete
- 3 Eco roof hook rotation, complete
- 4 Screw anchor, complete
- 5 Mounting rail
- 6 End clamp
- 7 Intermediate clamp
- 8 End cap *
- 9 Cable clip *
- 10 Panel clip *
- 11 Profile coupling *

* Optional

